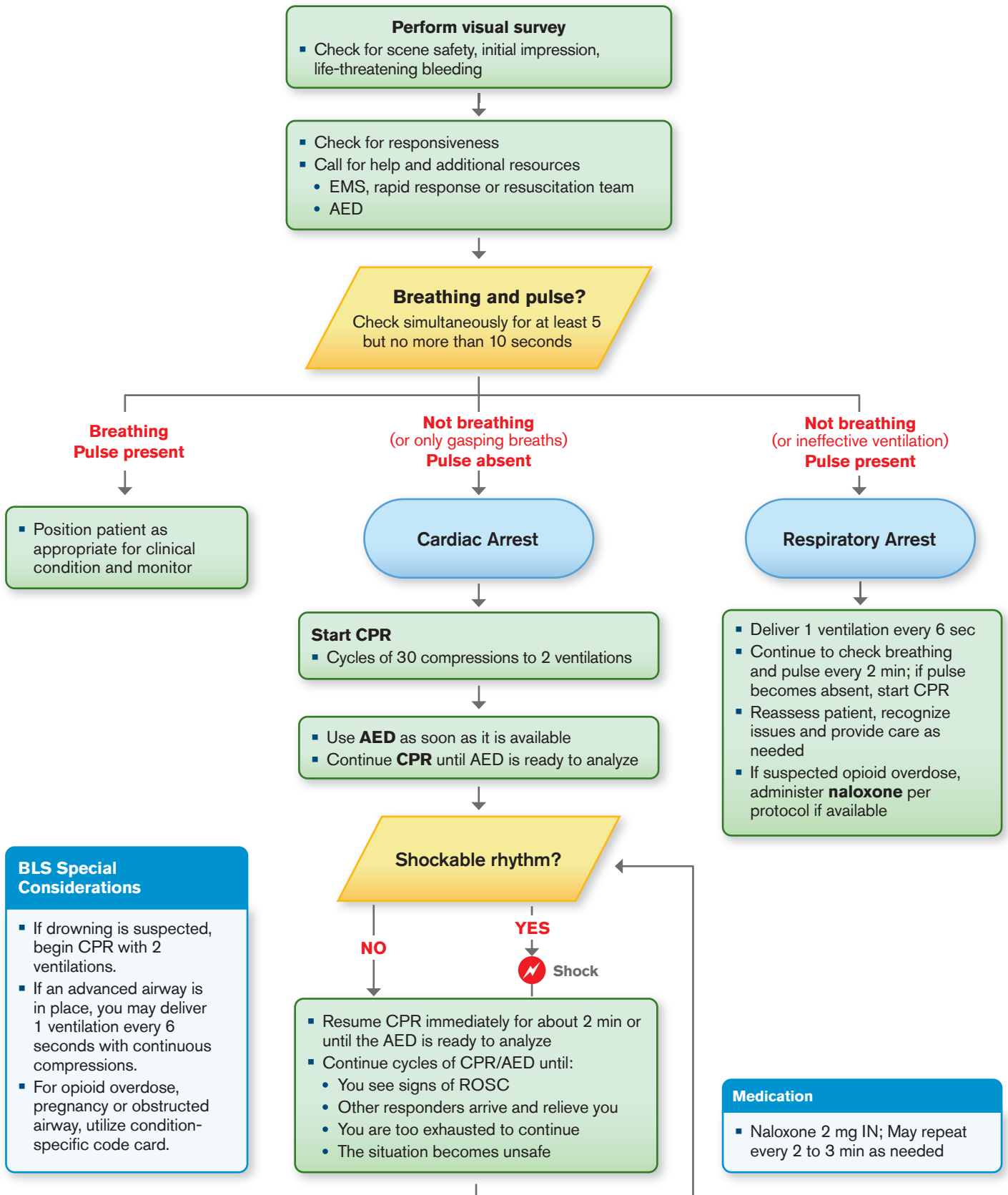


BASIC LIFE SUPPORT: ADULTS AND ADOLESCENTS



BLS Special Considerations

- If drowning is suspected, begin CPR with 2 ventilations.
- If an advanced airway is in place, you may deliver 1 ventilation every 6 seconds with continuous compressions.
- For opioid overdose, pregnancy or obstructed airway, utilize condition-specific code card.

Medication

- Naloxone 2 mg IN; May repeat every 2 to 3 min as needed