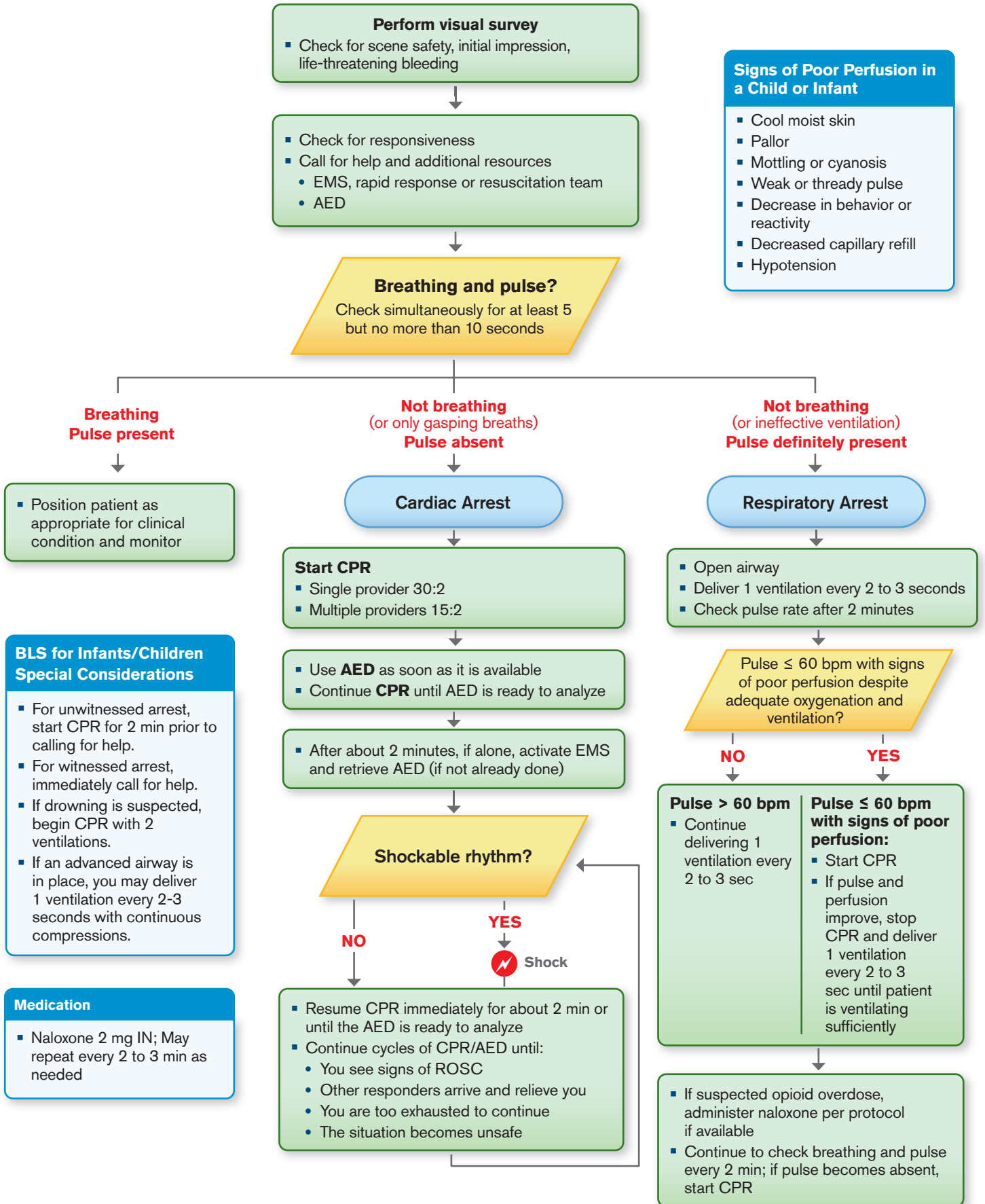


BASIC LIFE SUPPORT: CHILDREN AND INFANTS



Signs of Poor Perfusion in a Child or Infant

- Cool moist skin
- Pallor
- Mottling or cyanosis
- Weak or thready pulse
- Decrease in behavior or reactivity
- Decreased capillary refill
- Hypotension

BLS for Infants/Children Special Considerations

- For unwitnessed arrest, start CPR for 2 min prior to calling for help.
- For witnessed arrest, immediately call for help.
- If drowning is suspected, begin CPR with 2 ventilations.
- If an advanced airway is in place, you may deliver 1 ventilation every 2-3 seconds with continuous compressions.

Medication

- Naloxone 2 mg IN; May repeat every 2 to 3 min as needed