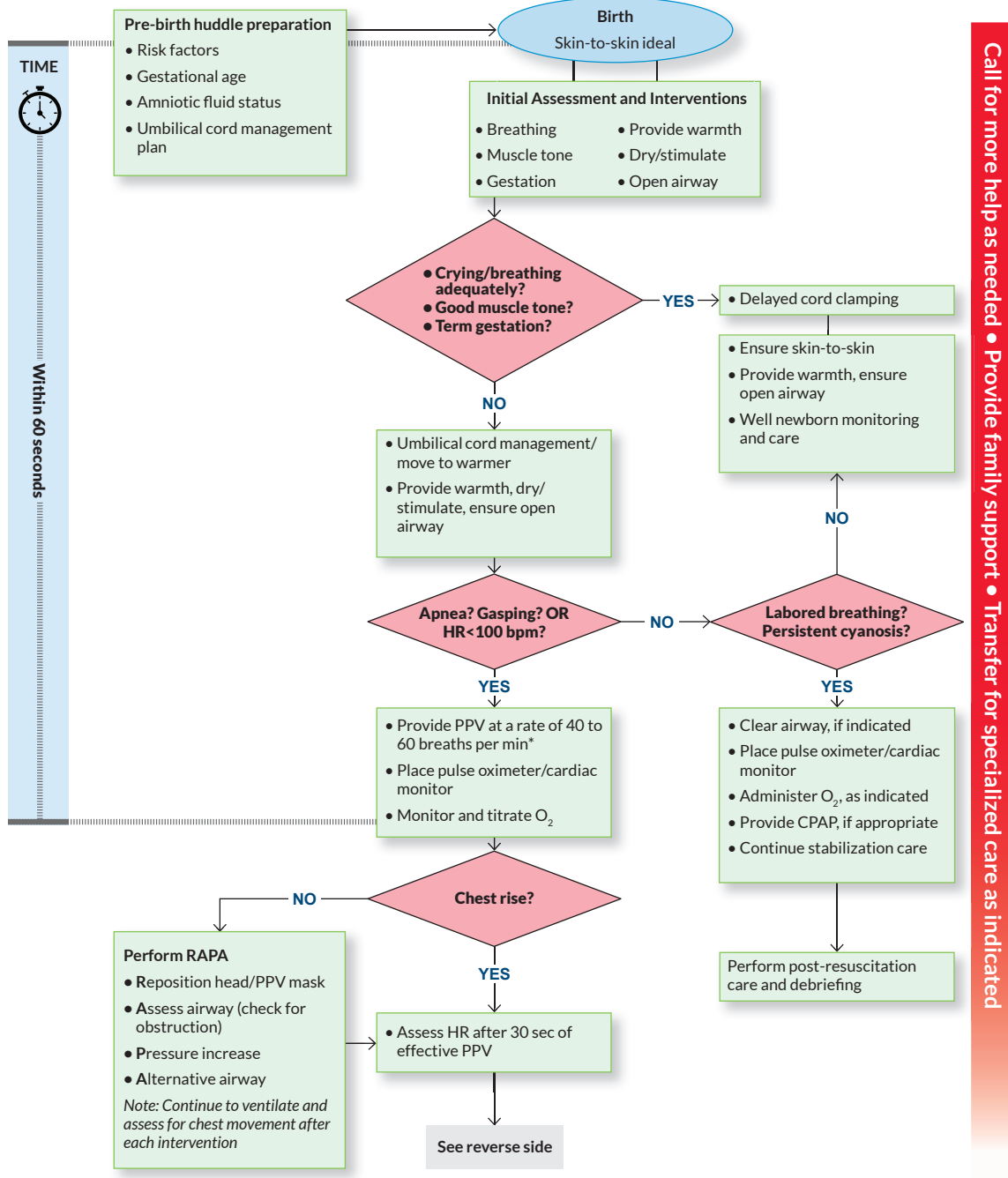


Newborn Resuscitation Code Card

NEWBORN RESUSCITATION

NR - 2025 Version These treatment guidelines must be implemented according to the healthcare provider's scope of practice and environment.



* O₂: 21% for ≥35 weeks' gestation, 21% to 30% for <35 weeks' gestation; PIP: 20 to 25 cm H₂O; PEEP: 5 cm H₂O

Copyright © 2025 The American National Red Cross

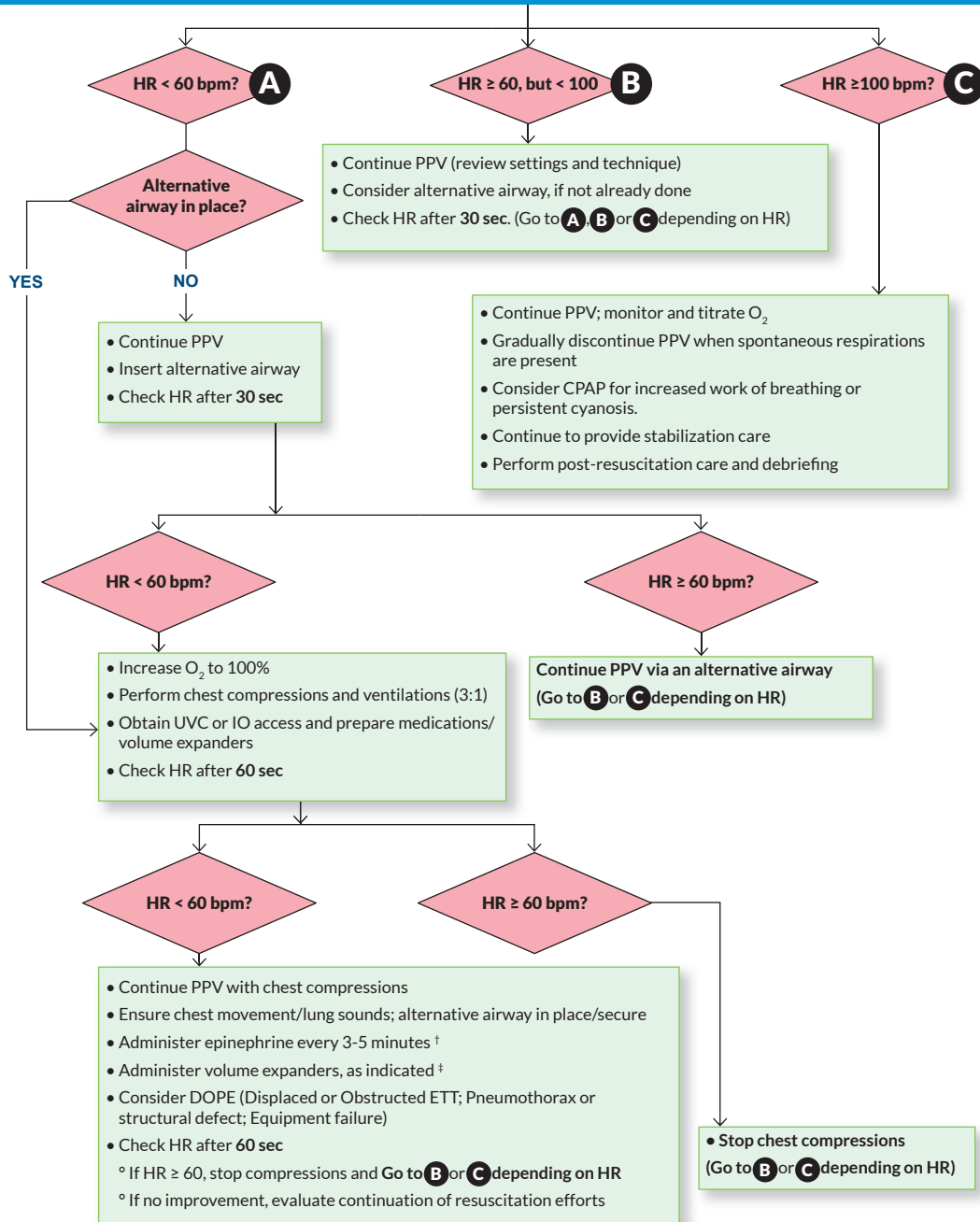


American Red Cross
Training Services

Continued

NEWBORN RESUSCITATION

NR - 2025 Version



Call for more help as needed • Provide family support • Transfer for specialized care as indicated

† IV/IO: 0.1 to 0.3 mL/kg, suggested: 0.2 mL/kg (0.1 mg/mL concentration) rapidly, followed by 3 mL flush;
ETT: 1 mL/kg (0.1 mg/mL concentration), PPV to disperse

‡ IV/IO: 0.9% NS or PRBCs, 10 mL/kg (over 5 to 10 min), flush after PRBCs

Copyright © 2025 The American National Red Cross



American Red Cross
Training Services