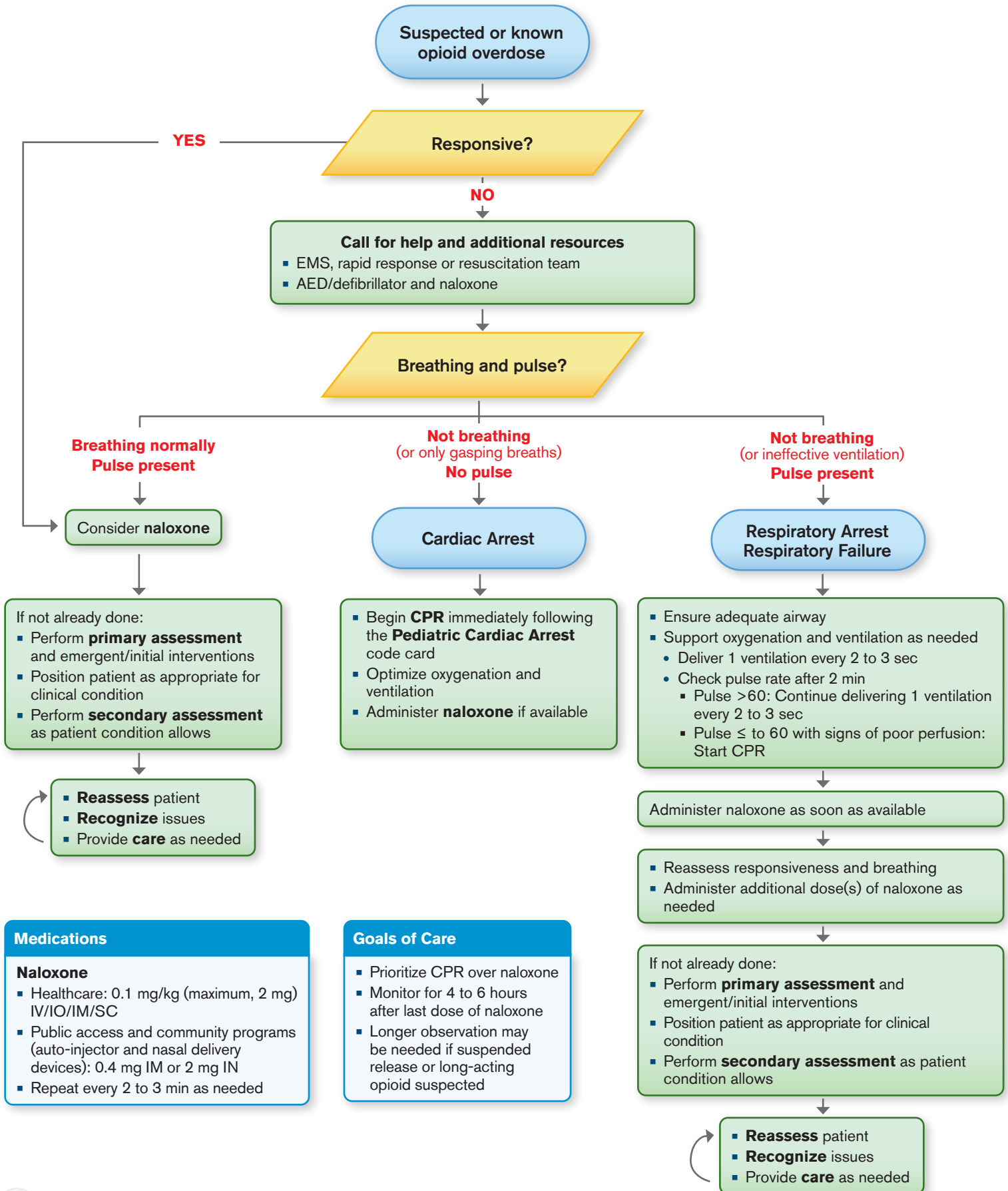


PEDIATRIC SUSPECTED OR KNOWN OPIOID EMERGENCY



Medications

Naloxone

- Healthcare: 0.1 mg/kg (maximum, 2 mg) IV/IO/IM/SC
- Public access and community programs (auto-injector and nasal delivery devices): 0.4 mg IM or 2 mg IN
- Repeat every 2 to 3 min as needed

Goals of Care

- Prioritize CPR over naloxone
- Monitor for 4 to 6 hours after last dose of naloxone
- Longer observation may be needed if suspended release or long-acting opioid suspected